



**AAPPL TESTING**

APRIL 16 (TUESDAY D DAY)

APRIL 17 (WEDNESDAY E DAY)

# What is Proficiency in language?



What can students **DO** with language, in terms of speaking, writing, listening and reading in **REAL WORLD** situations; in **NON REHEARSED** and **SPONTANEOUS** context.

ACTFL Guideline

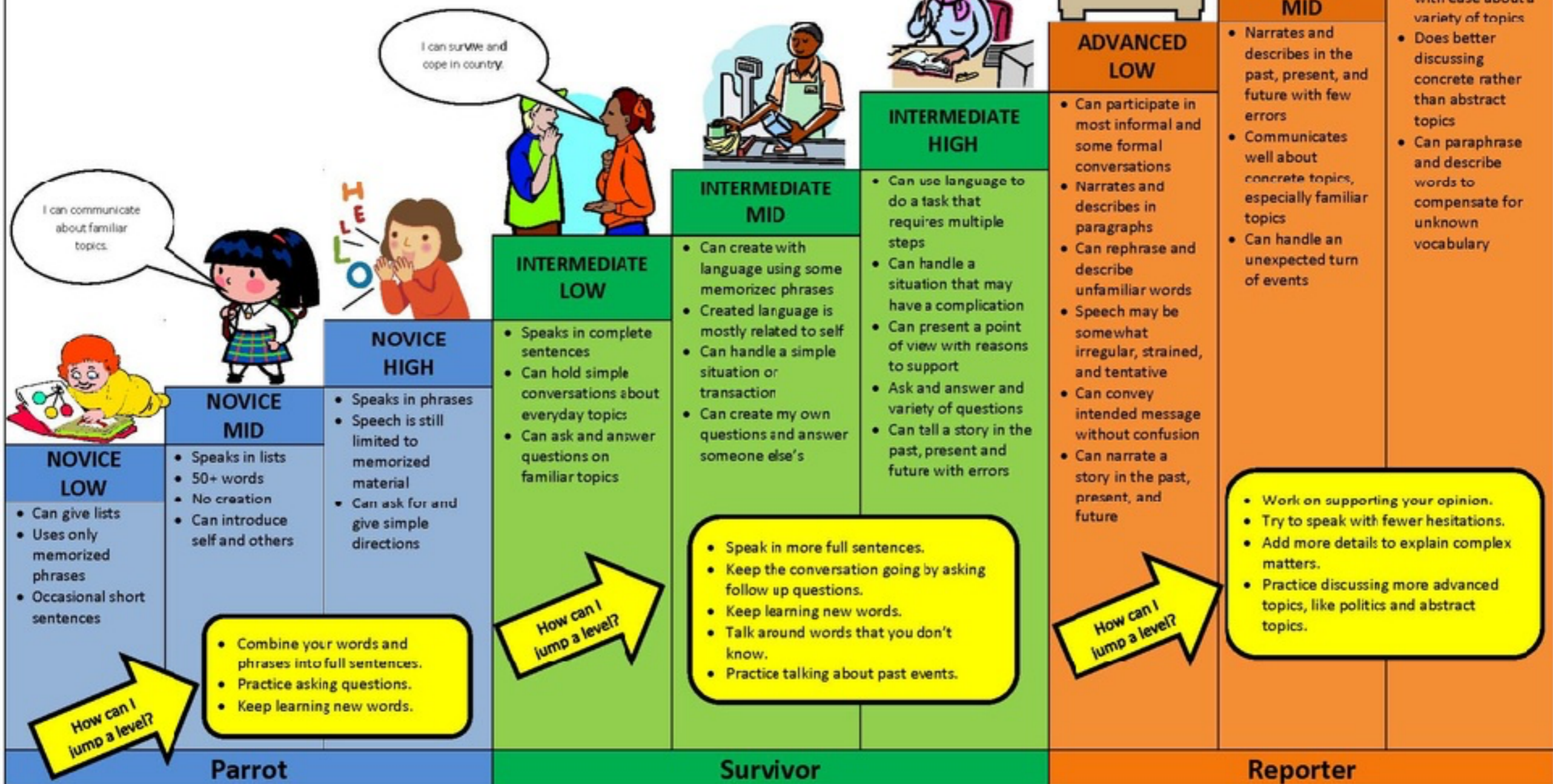
American Council on the Teaching of Foreign Languages

Basic User

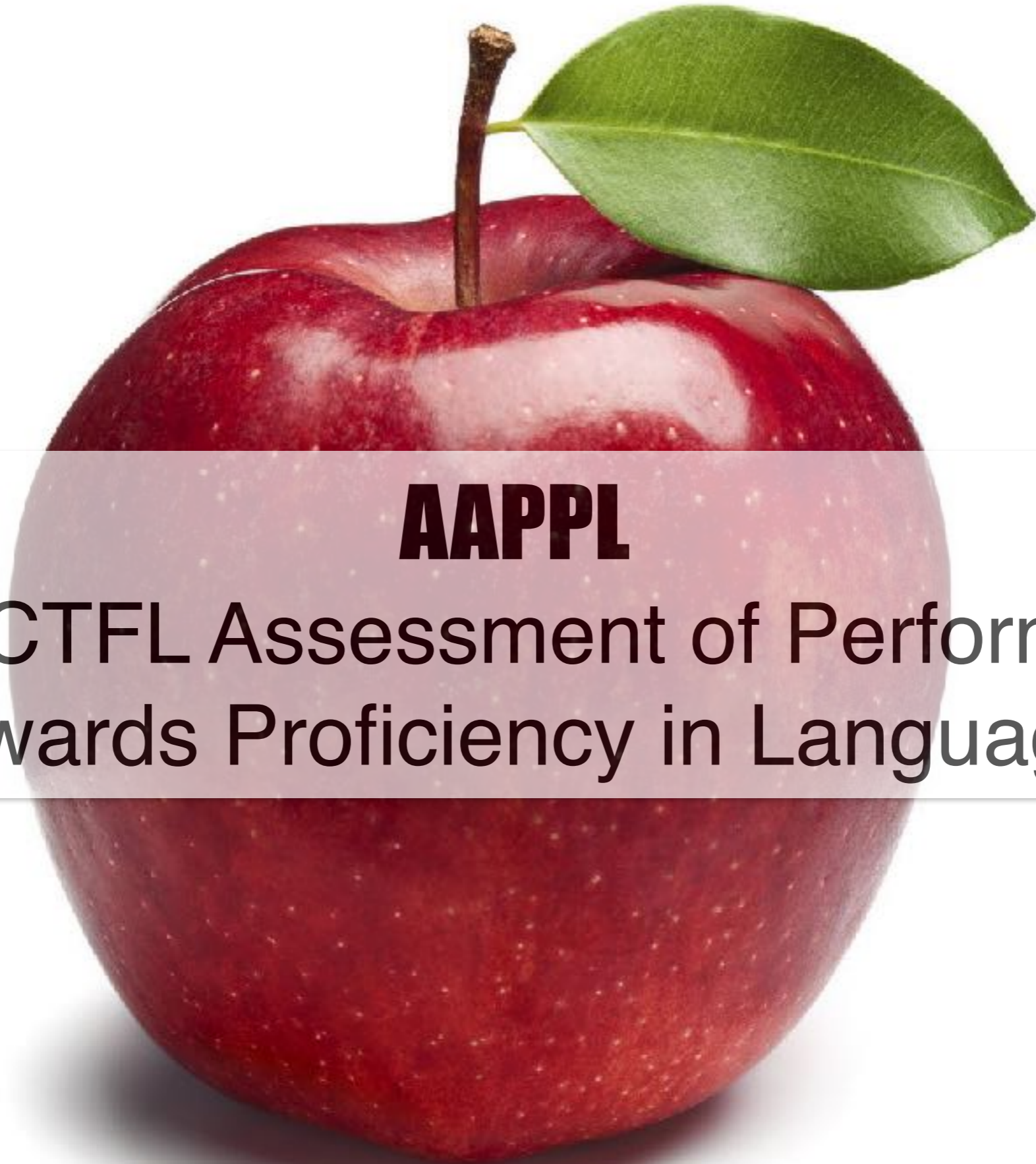
Independent User

Proficient User

# What's my proficiency level?



\*Based on 2012 ACTFL Proficiency Guidelines  
J. Wardle, Clark County School District



# **AAPPL**

The ACTFL Assessment of Performance  
towards Proficiency in Language

# What is AAPPL?

- the voices from the students who took AAPPL -



7:00 video

# How will AAPPL measure?

ACTFL Proficiency Guidelines	ACTFL Performance Scale	AAPPL Measure Performance Score	Form	
Advanced Low	<b>ADVANCED</b>	<b>A</b>	A	B
Intermediate High		<b>I-5</b>		
Intermediate Mid	<b>INTERMEDIATE</b>	<b>I-4</b>	A	
Intermediate Mid		<b>I-3</b>		
Intermediate Mid		<b>I-2</b>		
Intermediate Mid		<b>I-1</b>		
Intermediate Low		<b>N-4</b>		
Novice High		<b>NOVICE</b>		
Novice Mid	<b>N-2</b>			
Novice Mid	<b>N-1</b>			
Novice Low				

## **Q: How is AAPPL made up?**

The AAPPL is made up of four components (modes):

Interpersonal Listening/Speaking (ILS)  
Interpretive Reading (IR)  
Interpretive Listening (IL)  
Presentational Writing (PW)

## **Q: What are these? What does it mean?**

Check the next slides.







# Three Modes of Communication



## Interpersonal

person-person  
spontaneous  
communication  
speaking/writing



**Negotiation of meaning**

**Authentic materials**

## Interpretive

one-way receptive  
communication,  
listening/reading/viewing



## Presentational

one-way, drafted, edited,  
productive communication  
speaking/writing



**Focus on form**



**FREQUENTLY  
ASKED  
QUESTIONS**

## **Q: How is AAPPL made up?**

The AAPPL is made up of four components (modes):

Interpersonal Listening/Speaking (ILS)  
Interpretive Reading (IR)  
Interpretive Listening (IL)  
Presentational Writing (PW)

## **Q: How much time does the AAPPL require?**

Each component takes approximately 30 minutes.  
You should not start a new component if you know there will not be enough time to finish it.

## **Q: What are the topics?**

Check the next slide.

**CONTENT**

A bright yellow speech bubble is centered on a white background. The word "CONTENT" is written across the middle of the bubble in a bold, white, sans-serif font. The letters are cut out, creating a 3D effect as if they are floating within the bubble. The bubble has a soft shadow underneath it, giving it a sense of depth.

# TOPICS

AAPPL Content 2019 (Grades 9-12): Arabic, Chinese-Mandarin, English, French, German, Hindi, Italian, Japanese, Korean, Portuguese, Russian, Spanish, and Thai

<i>Mode/Level</i>	<b>Interpersonal Listening/Speaking</b>	<b>Presentational Writing</b>	<b>Interpretive Listening</b>	<b>Interpretive Reading</b>
<i>Novice</i>	<ul style="list-style-type: none"> <li>• School</li> <li>• Food</li> <li>• Home</li> </ul>	<ul style="list-style-type: none"> <li>• Weather</li> <li>• Celebrations</li> <li>• City/Town</li> </ul>	<ul style="list-style-type: none"> <li>• About People</li> <li>• Leisure Activities</li> <li>• Daily Schedule/Routine</li> </ul>	<ul style="list-style-type: none"> <li>• Family</li> <li>• Health</li> <li>• Daily Life</li> </ul>
<i>Intermediate</i>	<ul style="list-style-type: none"> <li>• TV and Movies</li> <li>• Clubs</li> <li>• Community Events</li> <li>• Health</li> <li>• Careers</li> <li>• Art</li> </ul>	<ul style="list-style-type: none"> <li>• Travel</li> <li>• Theater</li> <li>• Pop Culture</li> <li>• Animals</li> <li>• Directions</li> <li>• Communications</li> </ul>	<ul style="list-style-type: none"> <li>• School Clubs</li> <li>• Careers</li> <li>• Science</li> <li>• Community Events</li> <li>• Travel</li> <li>• Music</li> </ul>	<ul style="list-style-type: none"> <li>• Art</li> <li>• Animals</li> <li>• Biography</li> <li>• School Clubs</li> <li>• Health</li> <li>• Instructions</li> </ul>
<i>Advanced</i>	<ul style="list-style-type: none"> <li>• Customs/Traditions</li> <li>• Elections</li> <li>• News</li> </ul>	<ul style="list-style-type: none"> <li>• Language Arts</li> <li>• Environment</li> <li>• Education</li> </ul>	<ul style="list-style-type: none"> <li>• Technology</li> <li>• Environment</li> <li>• Education</li> </ul>	<ul style="list-style-type: none"> <li>• Environment</li> <li>• Plant Life</li> <li>• Communications</li> </ul>

# TASKS

<i>Mode/Level</i>	<b>Interpersonal Listening/Speaking</b>	<b>Presentational Writing</b>	<b>Interpretive Listening</b>	<b>Interpretive Reading</b>
<i>Novice</i>	Talk about and respond to questions on familiar topics	Write to share information about familiar topics	Listen to someone speak on familiar topics and understand the gist	Read short texts on familiar topics and understand the gist and basic information
<i>Intermediate</i>	Talk about, describe, discuss, and ask questions about a variety of familiar topics related to self, others and everyday life in response to questions being asked	Write to communicate information and express one's thoughts about familiar topics related to self, others, and everyday life	Listen to someone speak on a variety of topics related to self, others, and everyday life and understand the main ideas and supporting details	Read texts on a variety of topics related to self, others, and everyday life; understand the main ideas and supporting details
<i>Advanced</i>	Talk at length about and express oneself on familiar topics and new concrete social, academic and general interest topics	Write extensively and express oneself on familiar and concrete social, academic and general interest topics	Listen to extended spoken passages on a variety of topics relevant to real-world contexts of general interest and answer questions based on what is heard	Read extended passages on a variety of topic relevant to real-world contexts of general interest and answer questions based on what is read

Helpful Tips

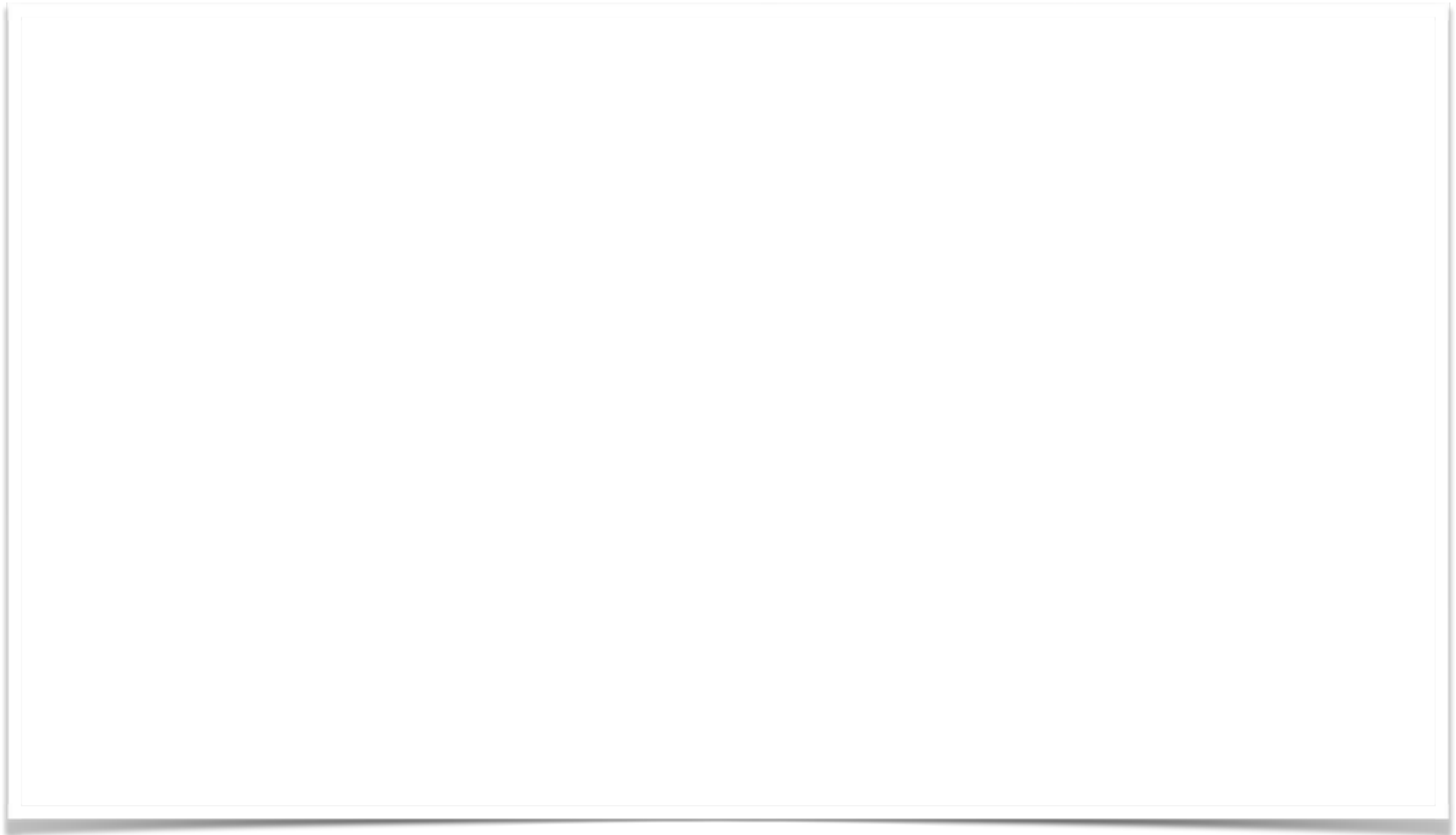


# **AAPPL TIPS - Speaking -**

2:00 video



# **AAPPL TIPS - Reading & Listening -**



00:40 video

# **AAPPL TIPS - Writing -**

1:00 video



# Let see if your laptop is ready for AAPPL

Goal: To get **green pass checks** for every category

**Step 1:** Reboot your computer

**Step 2:** Open Chrome Browser

**Step 3:** Click the link to do the System Check

<https://aappl2.actfltesting.org/systemcheck>

\* For Latin: <https://www.languagetesting.com/blog/alira-the-actfl-latin-interpretive-reading-assessment/>

**Step 4:** Follow the directions to get a green check.

**Step 5:** Troubleshooting

-Try enabling Flash, a different browser, follow the error message,

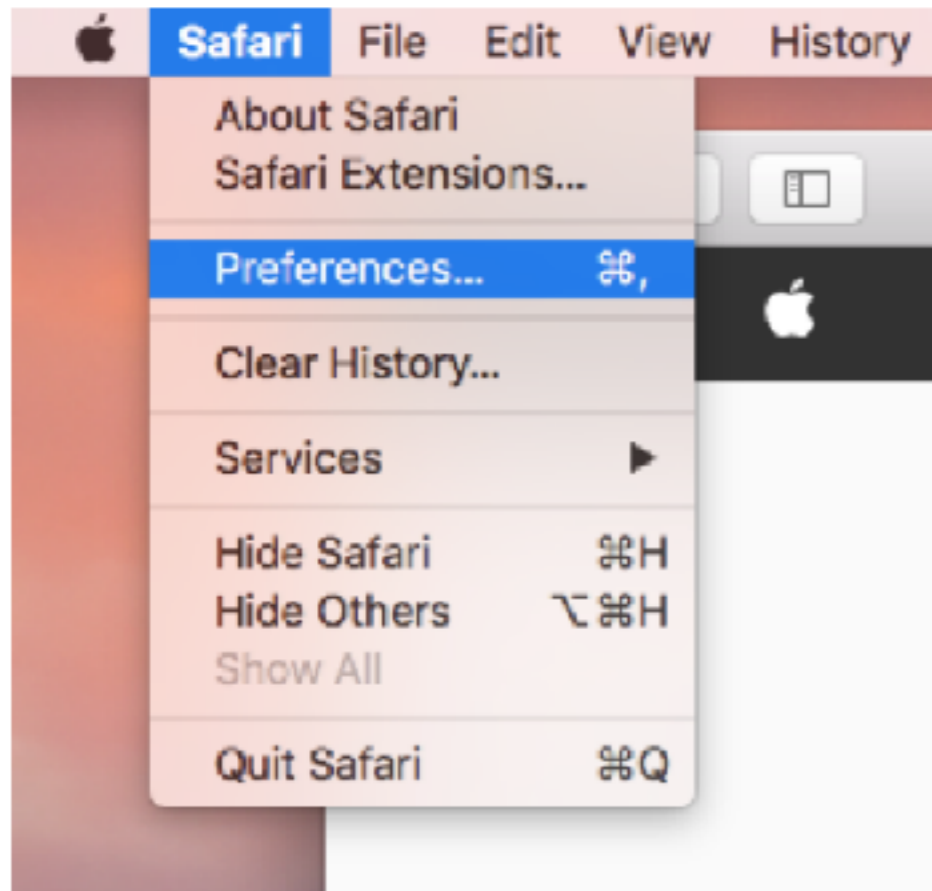
**Step 6:** May need to check with IT

# ON TESTING DAYS

- MAKE SURE TO BRING YOUR LAPTOP FULLY CHARGED AND A CHARGER JUST IN CASE
- REBOOT COMPUTER PRIOR TO TEST
- USE PUNAHOU WIFI NOT GUEST
- CONNECTION PROBLEM: TURN Wifi ON AND OFF
- All testing done in class

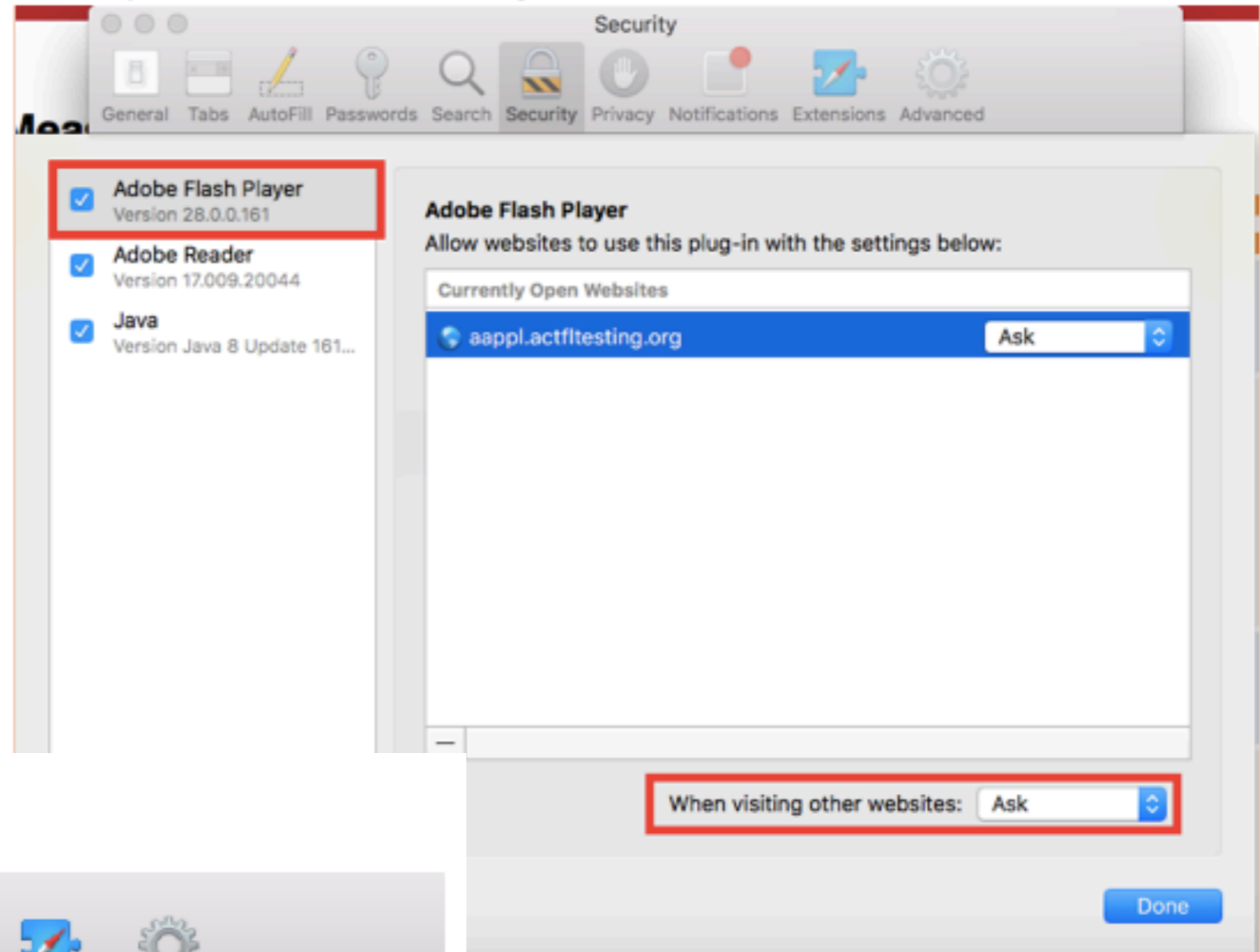
# How to enable Flash in Safari

Open Preferences in the Safari Menu



Place Checkmark next to Adobe Flash to enable

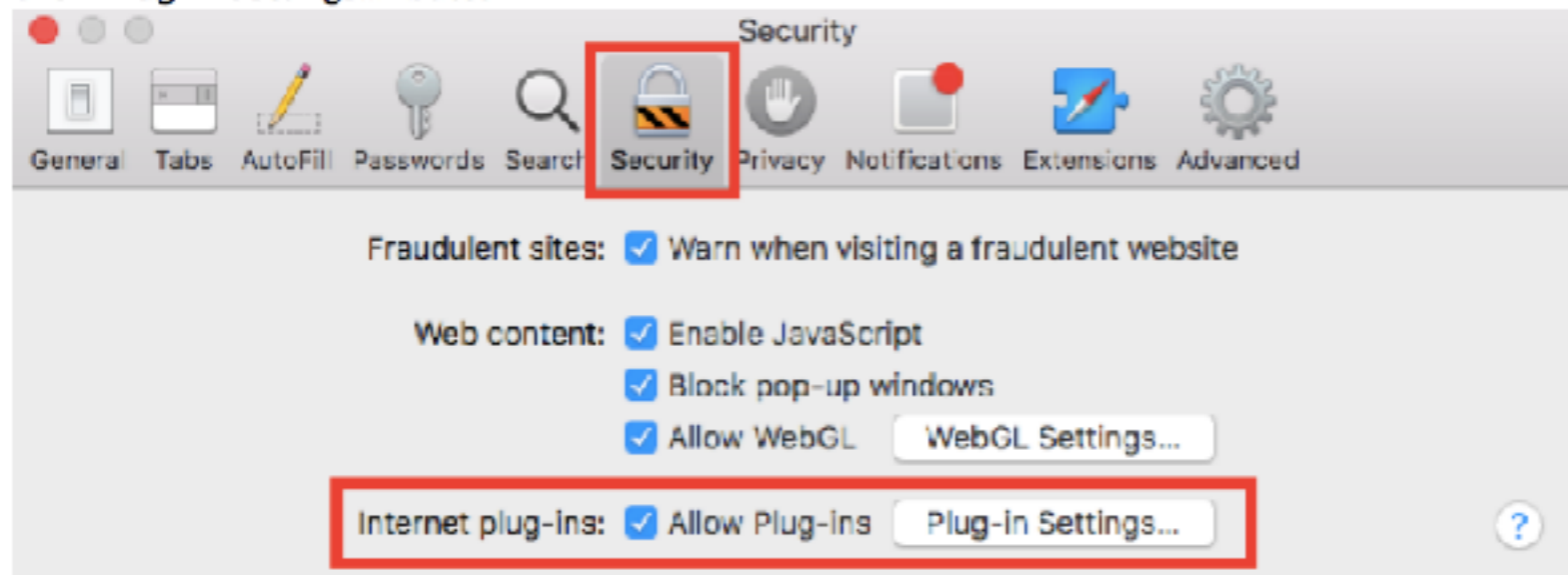
Click dropdown value for 'When visiting other websites' and set to 'Ask'



Select 'Security' tab

Make sure 'Allow Plug-Ins' is selected.

Click 'Plug-in Settings...' button















You can also update the settings for particular websites to 'On' if you would like flash to run without prompting each time. The easiest way to do this is to open the page you would like to update the flash setting for, and then open the preferences window.



<https://www.languagetesting.com/aappl2-demo>

## Group 1:

Do Interpretive Listening and Interpersonal Listening and Speaking tasks  
Do Interpretive Reading and Presentational Writing task

GROUP 1	Interpretive Listening			
GROUP 2	Interpretive Reading			
French				
GROUP 1	Interpersonal Listening and Speaking			
GROUP 2	Presentational Writing			

## Group 2:

Do Interpretive Reading and Presentational Writing task  
Do Interpretive Listening and Interpersonal Listening and Speaking tasks





**When?: APRIL 16 (TUESDAY D DAY)  
APRIL 17 (WEDNESDAY E DAY)**